

Brain teaser (CT Brain)

A set of 12 CT brain images are given below for evaluation. The interpretation of these images are provided at the end. Common CT images are provided in this series. More complicated and atypical ones will follow in the subsequent issues. Keep checking this section.



IMAGE 01

Plain CT of a 57-year-old man involved in a road traffic accident.

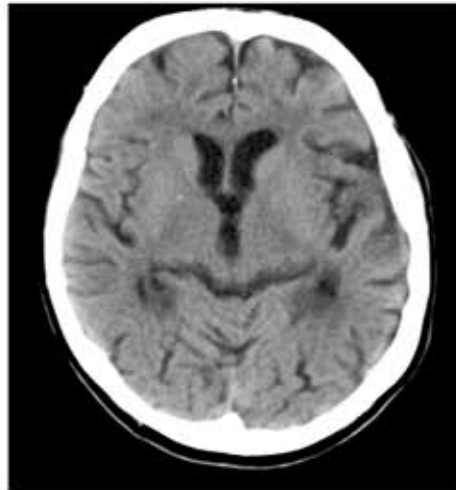


IMAGE 02

Non-enhanced CT of an 82-year-old female with altered sensorium.



IMAGE 03

NECT of a 64-year-old hypertensive man with haemiplegia (L).

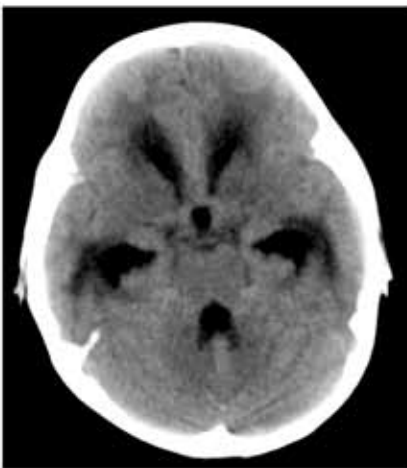


IMAGE 04

NECT of a 6-year-old male child with fever and neck stiffness.



IMAGE 05

Plain CT of a 2-year old female child with fever, neck stiffness, convulsions and hemiplegia (R).



IMAGE 06

A contrast enhanced CT of a 39-year-old male who was brought unconscious.



IMAGE 07

NECT of a 58-year-old man with seizures.

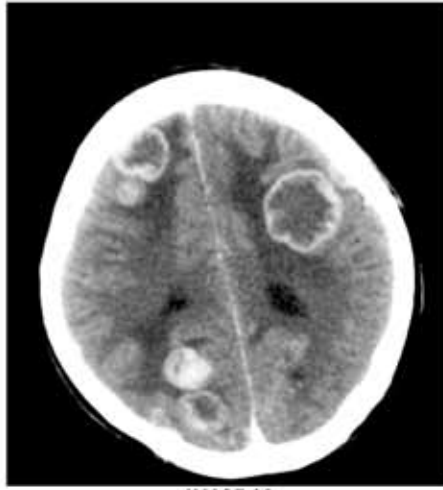


IMAGE 08

CECT of a 66 year old female with headache and altered sensorium.

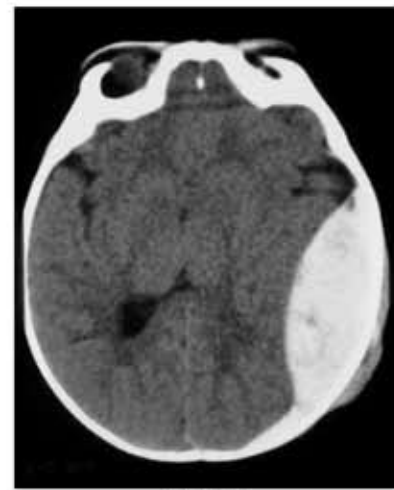


IMAGE 09

Plain CT of a 12 year old female child involved in a traffic accident

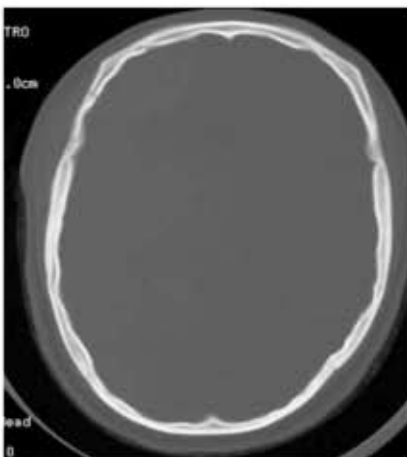


IMAGE 10

Can you identify the fracture?

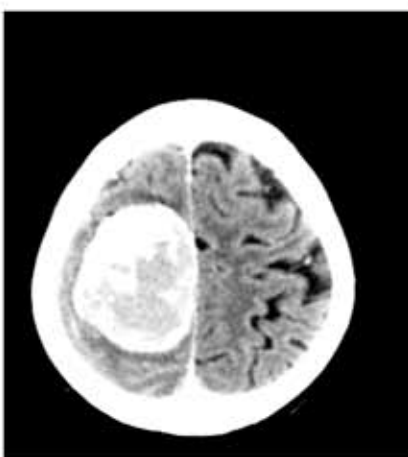


IMAGE 11

CECT of a 76 year old female with hemiparesis (L).

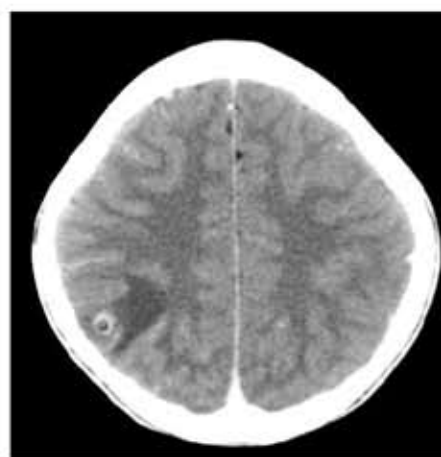


IMAGE 12

CECT of a 12 year old male child with seizures.

COMPILED

Dr. K. Gunamani Singh
Dept of Radiodiagnosis & Imaging
Nazareth Hospital
Shillong
+91-94363 07660
gskonsam@hotmail.com